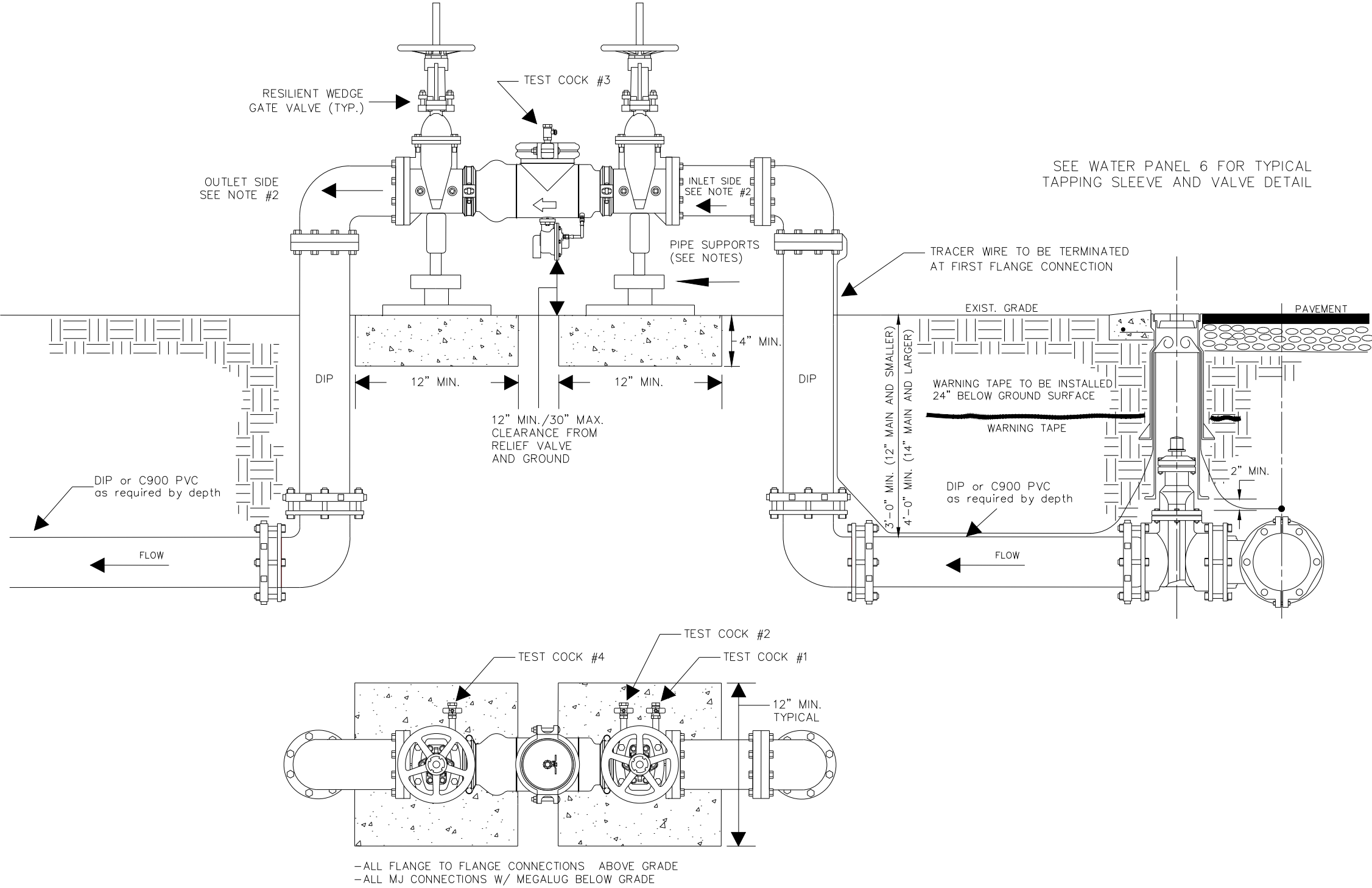


NOTES:

1. RP BACKFLOW IS PRIMARY DEVICE USED IN BERKELEY COUNTY UNLESS OTHERWISE APPROVED BY BCWS.
2. CONCRETE SLAB STABILIZER SUPPORTS BETWEEN BACKFLOW AND GROUND. SIZE BY MANUFACTURER'S RECOMMENDATIONS.
3. 4" OR GREATER BACKFLOW ASSEMBLIES SHALL REQUIRE PIPE SUPPORT.
4. FREEZE PROTECTION REQUIRED. APPROVED BRANDS ARE HOT BOX AND SAFE-T-COVER. SOFT BAG COVERS ARE ALSO ACCEPTABLE.
5. APPROPRIATE THRUST RESTRAINT AND SUPPORT MEASURES ARE TO BE DETERMINED BY OWNER/INSTALLER.
6. MANUFACTURERS ACCEPTED: ZURN WILKINS, WATTS, OR APPROVED EQUAL.
7. BACKFLOW TEST REQUIRED TO BE SUBMITTED TO BCWS OPERATIONS PRIOR TO FINAL ACCEPTANCE.



*TYPICAL FIRE LINE REDUCED PRESSURE ASSEMBLY  
(4" AND GREATER) BACKFLOW PREVENTER  
ABOVE GROUND INSTALLATION*

NOT TO SCALE

**WATER PANEL 15**

**BERKELEY COUNTY WATER AND SANITATION  
POTABLE WATER & SANITARY SEWER STANDARDS**

REVISED 03/24/2025