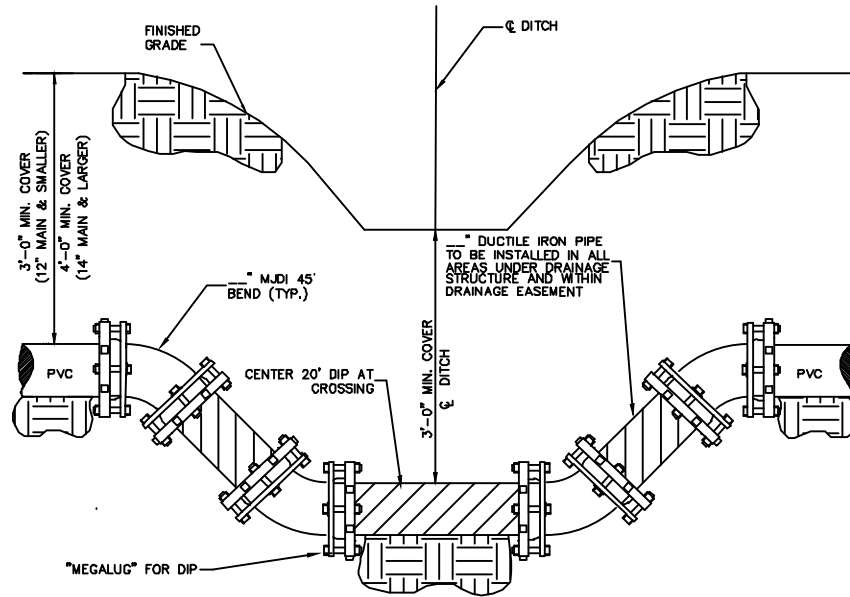


NOTES:

1. TYPICAL LENGTH OF DIP LEG DIRECTLY UNDER DITCH WILL BE 20' MINIMUM.
2. WIDER DITCHES WILL REQUIRE LONGER LENGTHS AND UP LEGS OF DEFLECTION SHALL MEET 3" MINIMUM COVER REQUIREMENTS.



*TYPICAL DITCH
CROSSING DETAIL*

NOT TO SCALE

WATER PANEL 12

**BERKELEY COUNTY WATER AND SANITATION
POTABLE WATER & SANITARY SEWER STANDARDS**

REVISED: JULY/2025