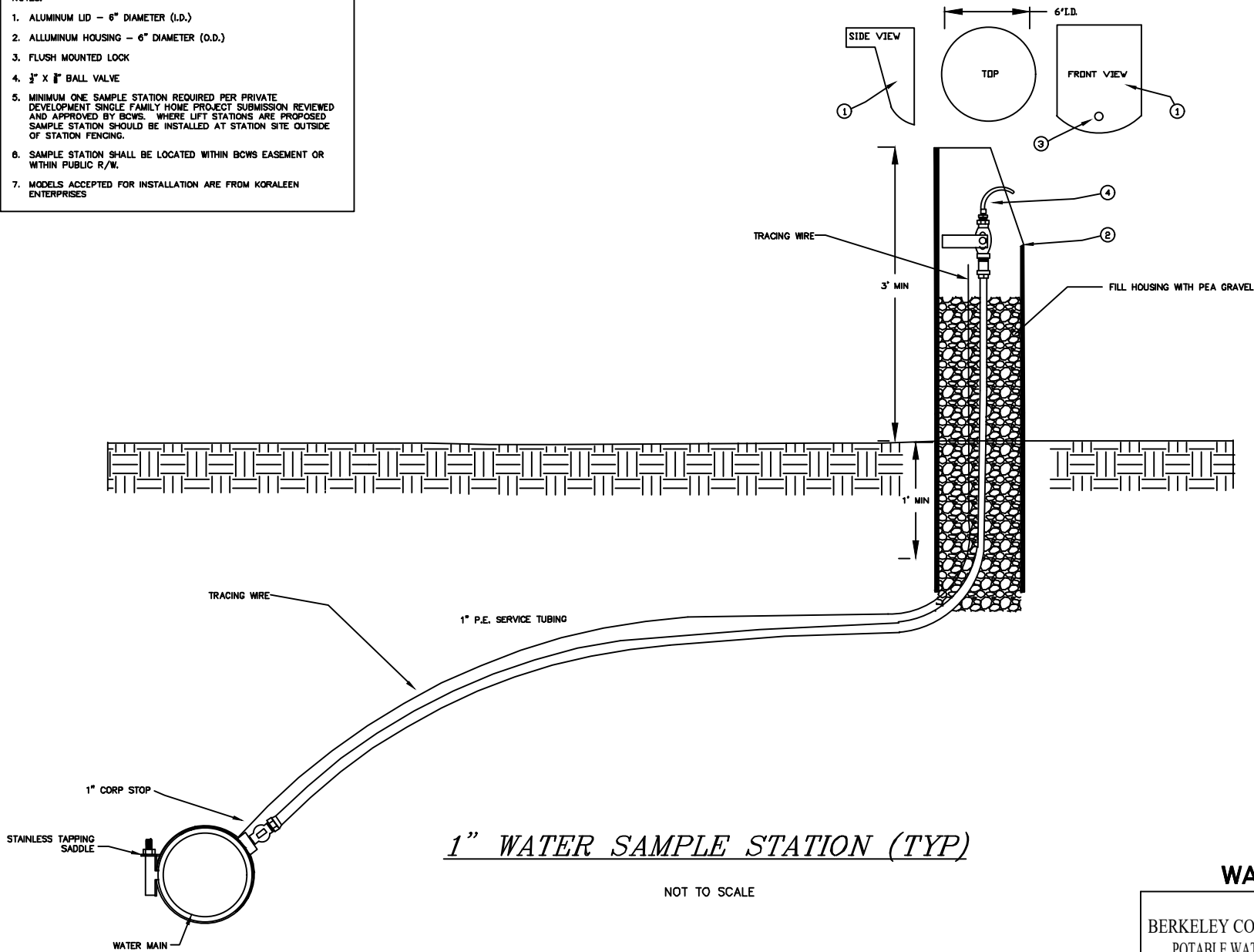


NOTES:

1. ALUMINUM LID - 6" DIAMETER (I.D.)
2. ALLUMINUM HOUSING - 6" DIAMETER (O.D.)
3. FLUSH MOUNTED LOCK
4. 3/4" X 1/2" BALL VALVE
5. MINIMUM ONE SAMPLE STATION REQUIRED PER PRIVATE DEVELOPMENT SINGLE FAMILY HOME PROJECT SUBMISSION REVIEWED AND APPROVED BY BCWS. WHERE LIFT STATIONS ARE PROPOSED SAMPLE STATION SHOULD BE INSTALLED AT STATION SITE OUTSIDE OF STATION FENCING.
6. SAMPLE STATION SHALL BE LOCATED WITHIN BCWS EASEMENT OR WITHIN PUBLIC R/W.
7. MODELS ACCEPTED FOR INSTALLATION ARE FROM KORALEEN ENTERPRISES



*1" WATER SAMPLE STATION (TYP)*

NOT TO SCALE

**WATER PANEL 16**

BERKELEY COUNTY WATER AND SANITATION  
 POTABLE WATER & SANITARY SEWER STANDARDS

REVISED JULY/2025