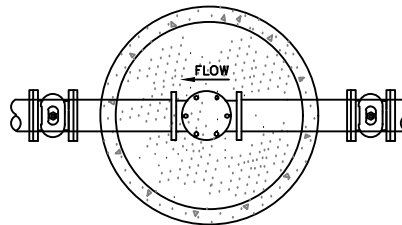
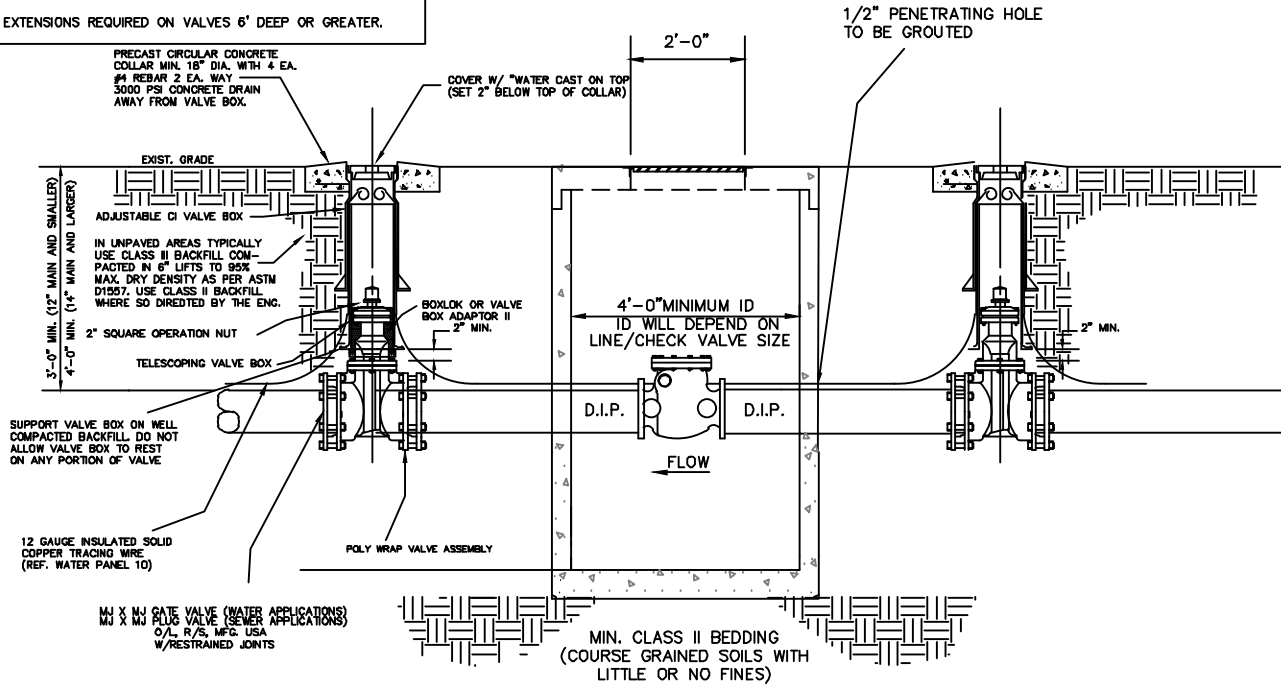


NOTES:

1. BOX AND TOP SHALL SUPPORT H-20 TRAFFIC LOADING
2. MANHOLE FRAME AND COVER TO BE TRAFFIC (H-20), TYPE, 24" CLEAR OPENING.
3. MANHOLE COVER TO BE WITHOUT LETTERING.
4. USE BOXLOK OR VALVE BOX ADAPTOR II FOR CENTERING BOXES OVER VALVES.
5. VALVE NUT EXTENSIONS REQUIRED ON VALVES 6' DEEP OR GREATER.



CHECK VALVE IN PRECAST UTILITY VAULT

NOT TO SCALE

WATER PANEL 2B

**BERKELEY COUNTY WATER AND SANITATION
POTABLE WATER & SANITARY SEWER STANDARDS**

REVIEWED JULY/2025