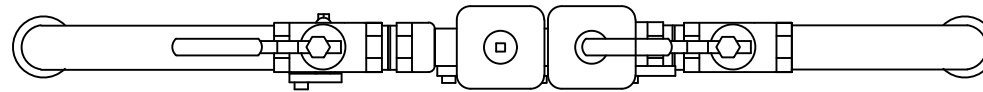
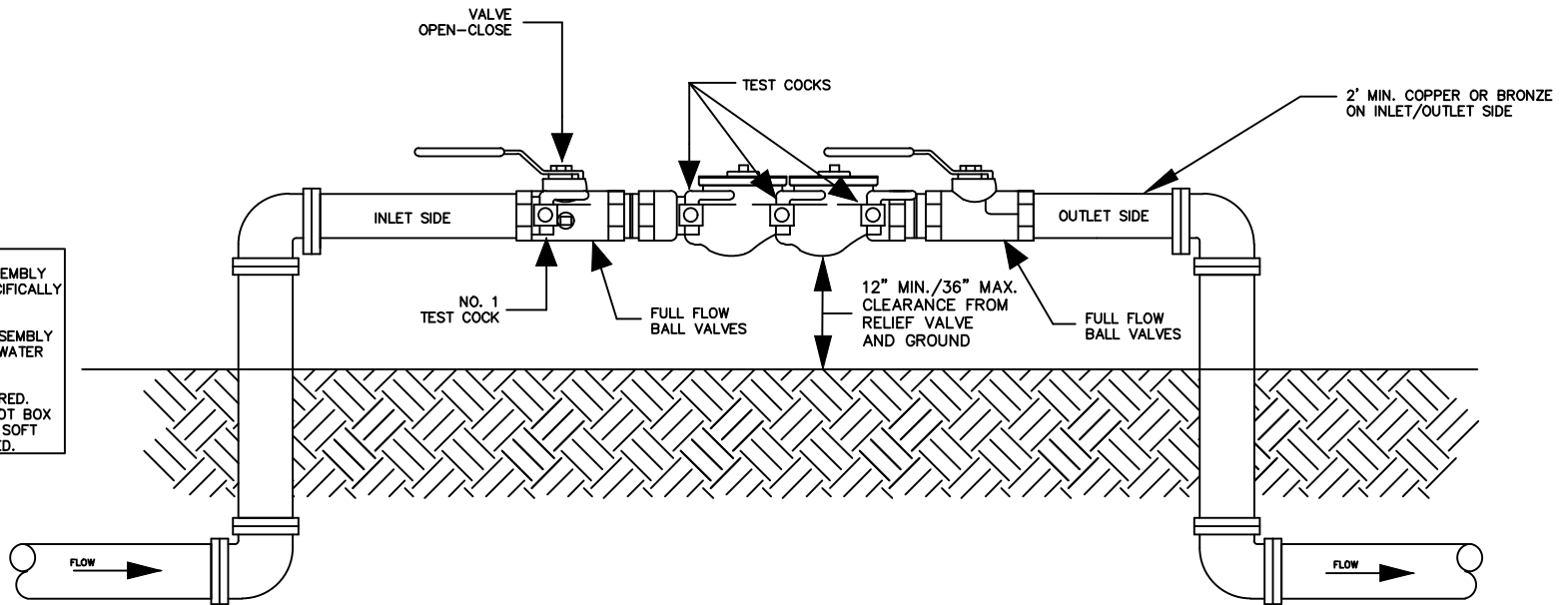


- NOTE:
1. DOUBLE CHECK VALVE ASSEMBLY ONLY ALLOWED WHEN SPECIFICALLY APPROVED BY BCWS.
 2. BACKFLOW PREVENTION ASSEMBLY MUST BE WITHIN 3 FT OF WATER METER
 3. FREEZE PROTECTION REQUIRED. APPROVED BRANDS ARE HOT BOX AND SAFE-T-COVER. NO SOFT BAG COVERS ARE ACCEPTED.



TYPICAL 1" TO 2" DOUBLE
CHECK VALVE ASSEMBLY ONLY
BACKFLOW PREVENTION ASSEMBLY
ABOVE GROUND INSTALLATION

NOT TO SCALE

BERKELEY COUNTY WATER AND SANITATION
 POTABLE WATER & SANITARY SEWER STANDARDS

REVISED 04/25/2023