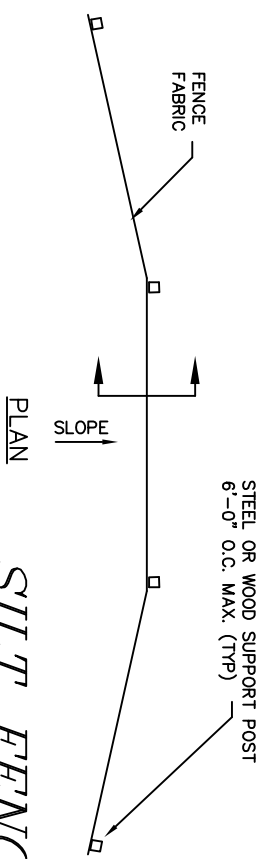
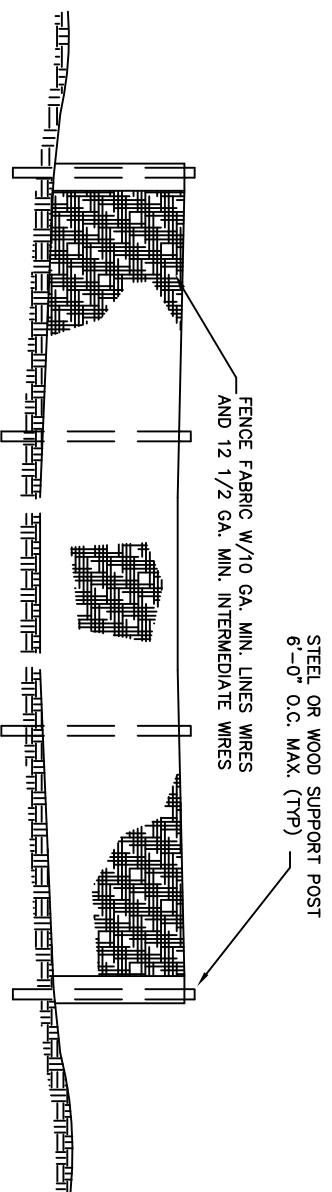
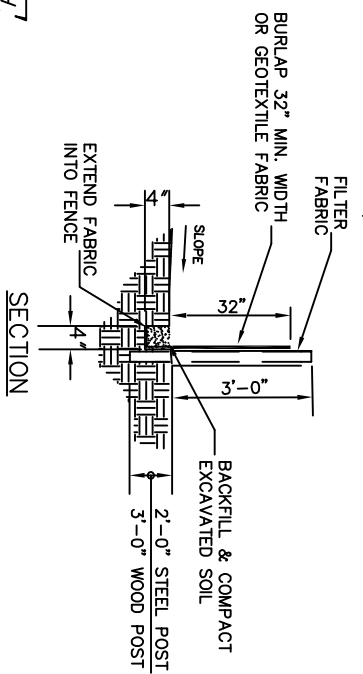


STRAW BALE SILTATION CONTROL BARRIER

NOT TO SCALE

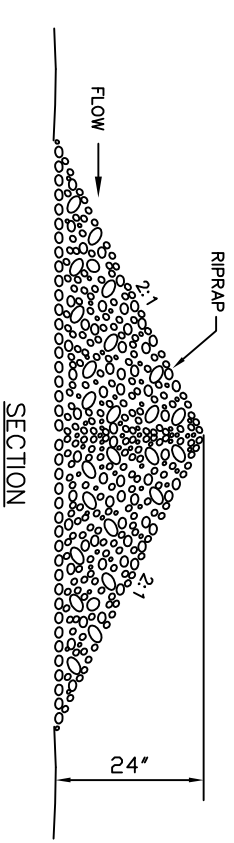
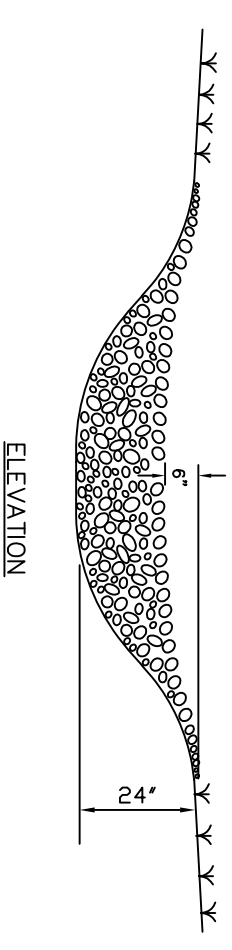
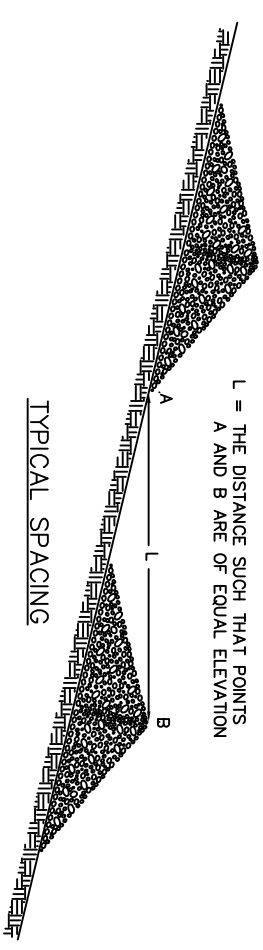


- NOTES:
1. FENCE FABRIC SHALL BE MINIMUM OF 32" IN WIDTH AND SHALL HAVE A MINIMUM OF 6 LINE WIRES WITH 12" STAY.
 2. BURLAP SHALL BE 7 1/2 OZ. WEIGHT AND MINIMUM OF 32" IN WIDTH. BURLAP SHALL BE FASTENED ADEQUATELY TO THE FABRIC AS DIRECTED BY THE ENGINEER. GEOTEXTILE FABRIC MAY BE USED AS A SUBSTITUTE.
 3. STEEL POST SHALL BE 5'-0" IN HEIGHT AND BE OF THE SELF-FASTENER ANGLE STEEL TYPE.
 4. WOOD POSTS SHALL BE 6' TO 7' IN HEIGHT AND 3" TO 4" IN DIAMETER. WIRE FABRIC SHALL BE FASTENED TO WOODEN POST WITH NOT LESS THAN #9 WIRE STAPLES 1 1/2" LONG.



SILT FENCE

NOT TO SCALE



RIPRAP CHECK DAM

NOT TO SCALE

SEDIMENTATION AND EROSION CONTROL COMMON PANEL 1A

BERKELEY COUNTY WATER AND SANITATION POTABLE WATER & SANITARY SEWER STANDARDS

REVISED 08/01/08